

Cubix Single & Double Cubix Radius

Het vervolg in de successerie "New Technology" is de spraakmakende, trendy Cubix® radiator. Deze moderne radiator is een hoge warmtecapaciteits designradiator. De Cubix® radiator past goed in een residentiële- én kantoorinterieurs. De vierkante profielvorm, maken van de Cubix® een uitzonderlijke warmtekampioen. De Cubix® in dubbelrijige uitvoering heeft de grootste warmtecapaciteit

Cubix® Radius

De Cubix® Radius is uitermate geschikt om in een hoek geplaatst te worden. Door het ontbreken van scherpe hoeken is deze Cubix® Radius een aanrader voor kinderkamers.

Material	steel pipes Ø 28 mm / Ø 30 mm (Cubix Radius) steel profi les 30x30 mm
Connection threads	2×G1/2"
Testing overpressure	1,3 MPa
Max. operating overpressure	1,0 MPa
Max. operating temperature	110 °C
Number of profiles Cubix Single	7, 10, 13
Number of profiles Cubix Double	14, 20, 26
Number of profiles Cubix Radius	7



1. 2. 3.

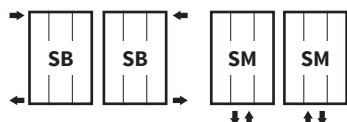


1. Cubix Single - Anthracite S02 [61] - with rail / 2. Cubix Double - Copper S03 [62] / 3. Cubix Radius - Dark grey S38 [50]

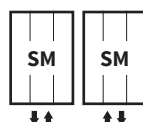
Custom-Made Radiator

Modification options	Cubix Single	Cubix Double	Cubix Radius
Surface treatment	colour	colour	colour
Height range [mm]	600-2 000 (increase of 10)	600-2 000 (increase of 10)	NO
Length range [mm]	318-990 (increase of 48)	318-606 (increase of 48)	NO
Change in one dimension	additional charge 25% ¹⁾	additional charge 25% ¹⁾	NO
Change in both dimensions	additional charge 35% ¹⁾	additional charge 35% ¹⁾	NO
Combined/electric version	NO	NO	NO
Middle connection (SM)	STANDARD	STANDARD	STANDARD
Side connection (SB)	YES (additional charge)	YES (additional charge)	NO
One-sided into space fixing	NO	NO	NO

Cubix Single & Double connection options



Cubix Radius connection options



The type of connection must be specified in the order

Cubix Single



Type Height (H) [mm] Length (L) [mm]	Depth (B)	Weight	Water capacity	Temperature exponent	Heating Output 75/65/20°C	Power input	Connection span (Z)	White RAL 9016	Electric
Code	[mm]	[kg]	[l]	[-]	[W]	[W]	[mm]		
DOCT 1800 0318	58	18,5	9,4	1,276	766	-	50	✓	-
DOCT 1800 0462	58	26,0	13,5	1,283	1 094	-	50	✓	-
DOCT 1800 0606	58	34,0	17,5	1,262	1 422	-	50	✓	-

Cubix Double



Type Height (H) [mm] Length (L) [mm]	Depth (B)	Weight	Water capacity	Temperature exponent	Heating Output 75/65/20°C	Power input	Connection span (Z)	White RAL 9016	Electric
Code	[mm]	[kg]	[l]	[-]	[W]	[W]	[mm]		
DOCD 1800 0318	86	36,0	18,6	1,250	1 096	-	50	✓	-
DOCD 1800 0462	86	51,3	26,5	1,250	1 564	-	50	✓	-
DOCD 1800 0606	86	66,7	34,6	1,250	2 030	-	50	✓	-

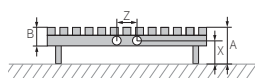
Cubix Radius



Type Height (H) [mm] Length (L) [mm]	Depth (B)	Weight	Water capacity	Temperature exponent	Heating Output 75/65/20°C	Power input	Connection span (Z)	White RAL 9016	Electric
Code	[mm]	[kg]	[l]	[-]	[W]	[W]	[mm]		
DOCR 1800 0295	109	18,2	9,3	1,276	748	-	50	✓	-

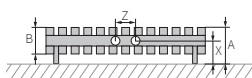
The weight of radiators is listed without water and package.

0



	X [mm]	A [mm]
Metal brackets	50	93

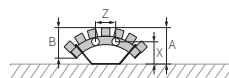
)



	X [mm]	A [mm]
Metal brackets	70	113

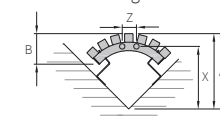
k

Wall mounting



	X [mm]	A [mm]
Metal brackets	85	129

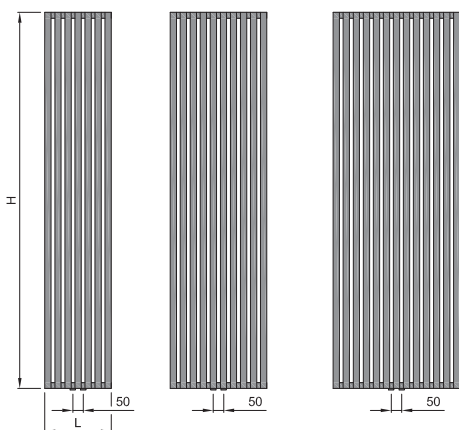
Corner mounting



	X [mm]	A [mm]
Metal brackets	220	265

Type height (H) / length (L) [mm]

0)

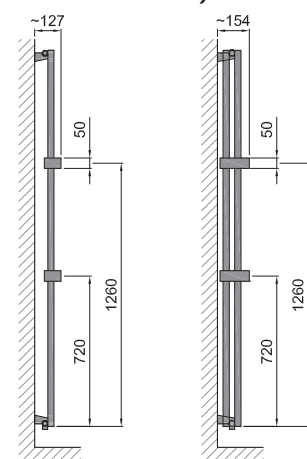


H: 1800
L: 0318

H: 1800
L: 0462

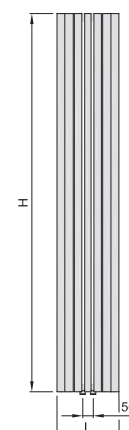
H: 1800
L: 0606

o)



Option of adding up to 2 rails

k



H: 1800
L: 0295

